

10 great views inside the human body

**The human body is
extraordinary.**

With **Human Anatomy Atlas**, you can see each body system right down to its individual components.

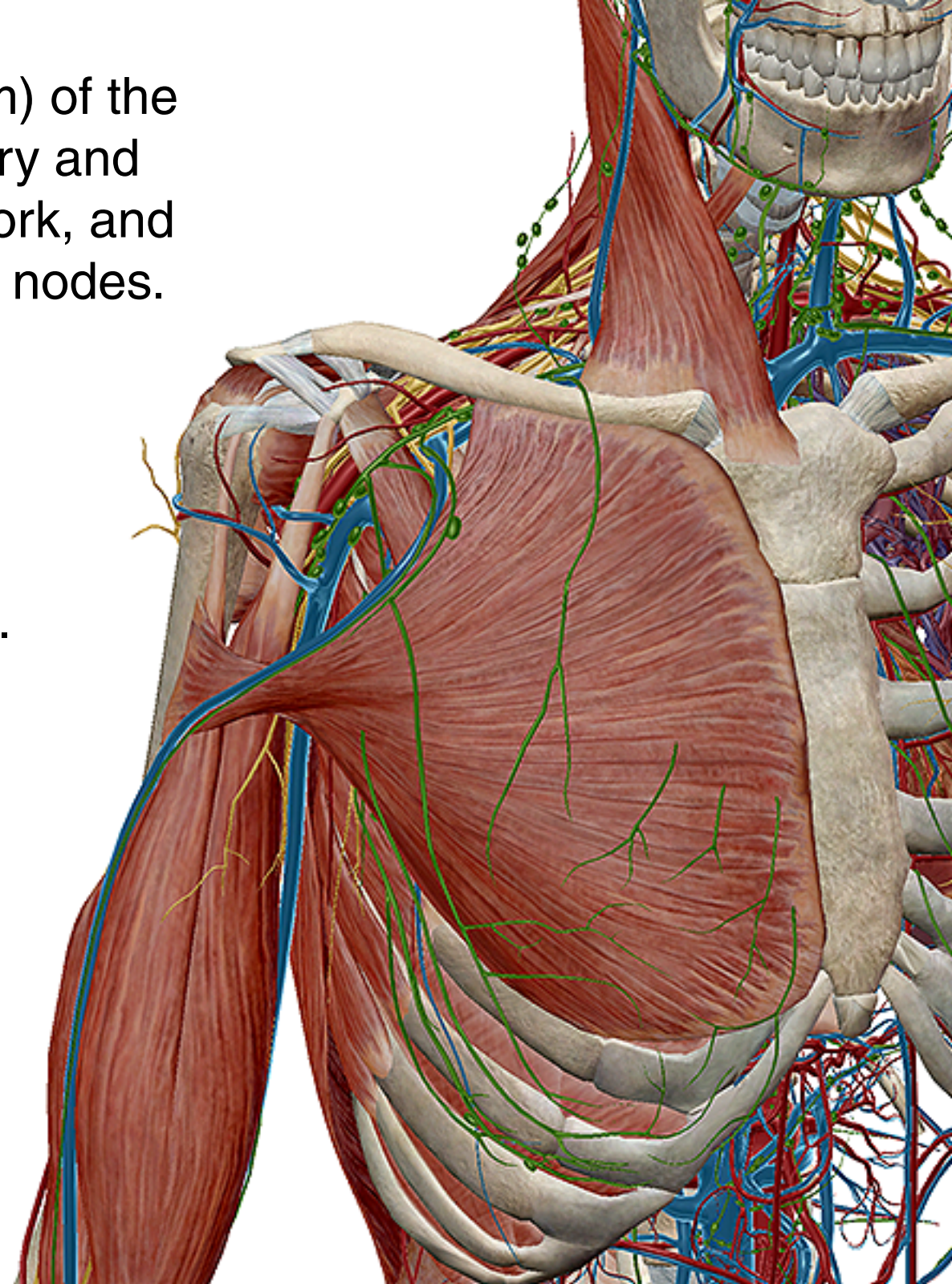
Let's take a look!

VISIBLE  **BODY**[®]

The **axilla region** (underarm) of the body includes the axillary artery and vein, the brachial plexus network, and the axillary lymph vessels and nodes.

The **brachial plexus** leads to nerve branches of the hand.

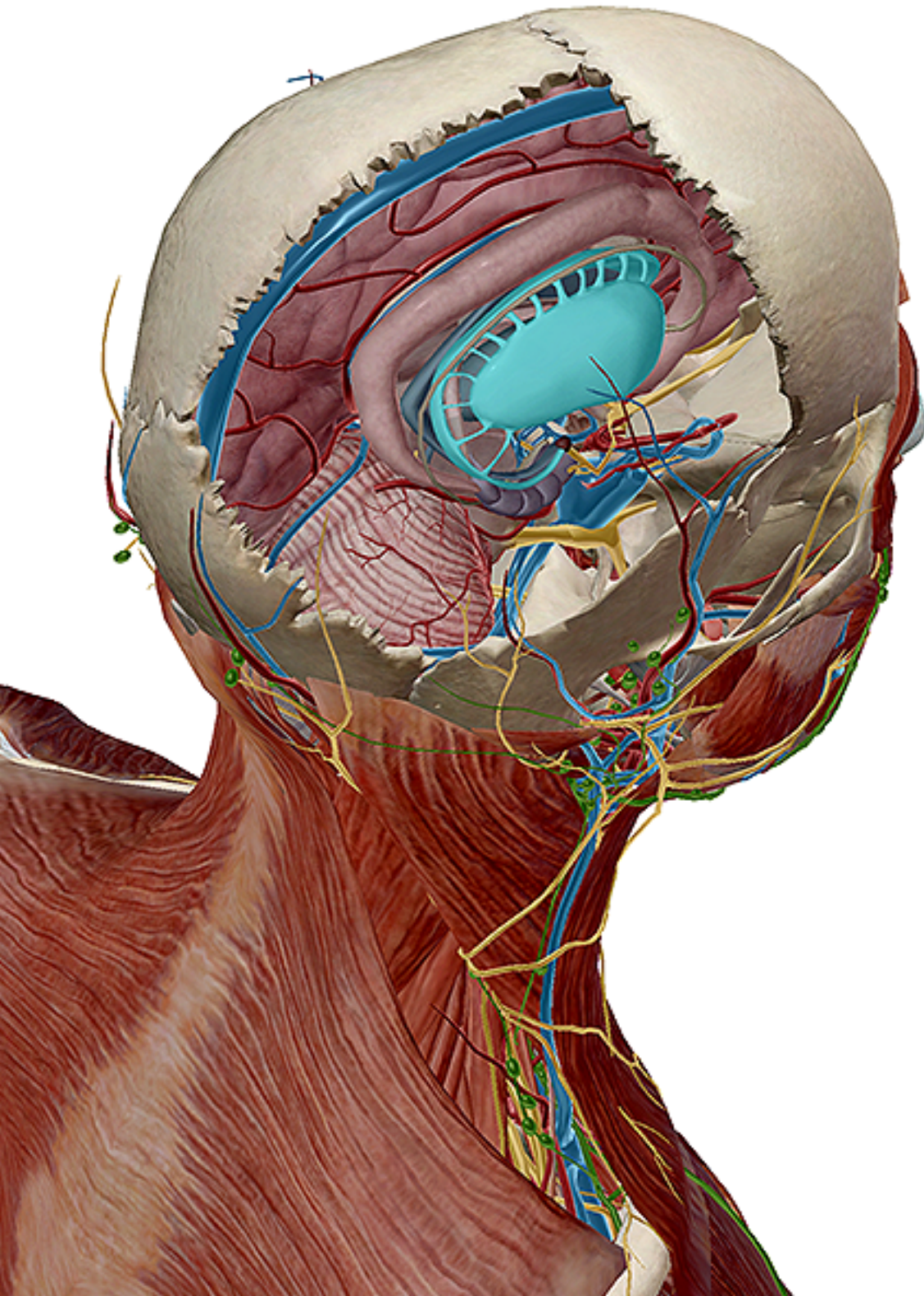
The **axillary vessels** and their branches supply blood to the shoulder and upper limb.



Share this slideshow!



www.visiblebody.com



Highlighted is the **basal ganglia**, a group of nuclei that surrounds the thalamus.

These brain structures regulate body movements by processing sensory and motor information from the **cerebral cortex**.

The **lymph nodes** of the lymphatic system filter foreign particles from **lymph**, an important bodily fluid.

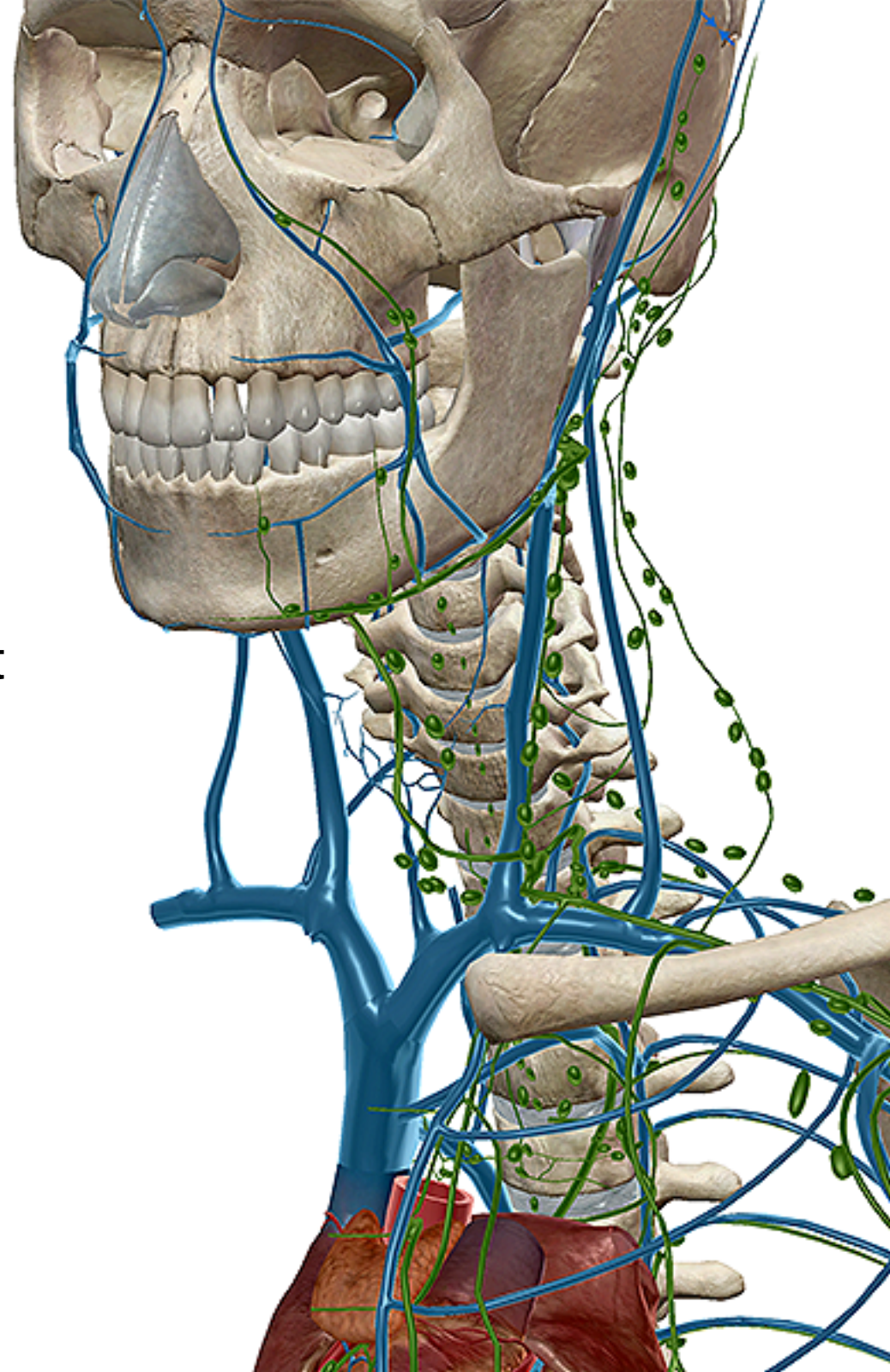
As lymph passes through, the nodes add **lymphocytes** to it; these cells identify and kill pathogens throughout the body.

Factoid: Swollen lymph nodes are used to diagnose certain infections and diseases.

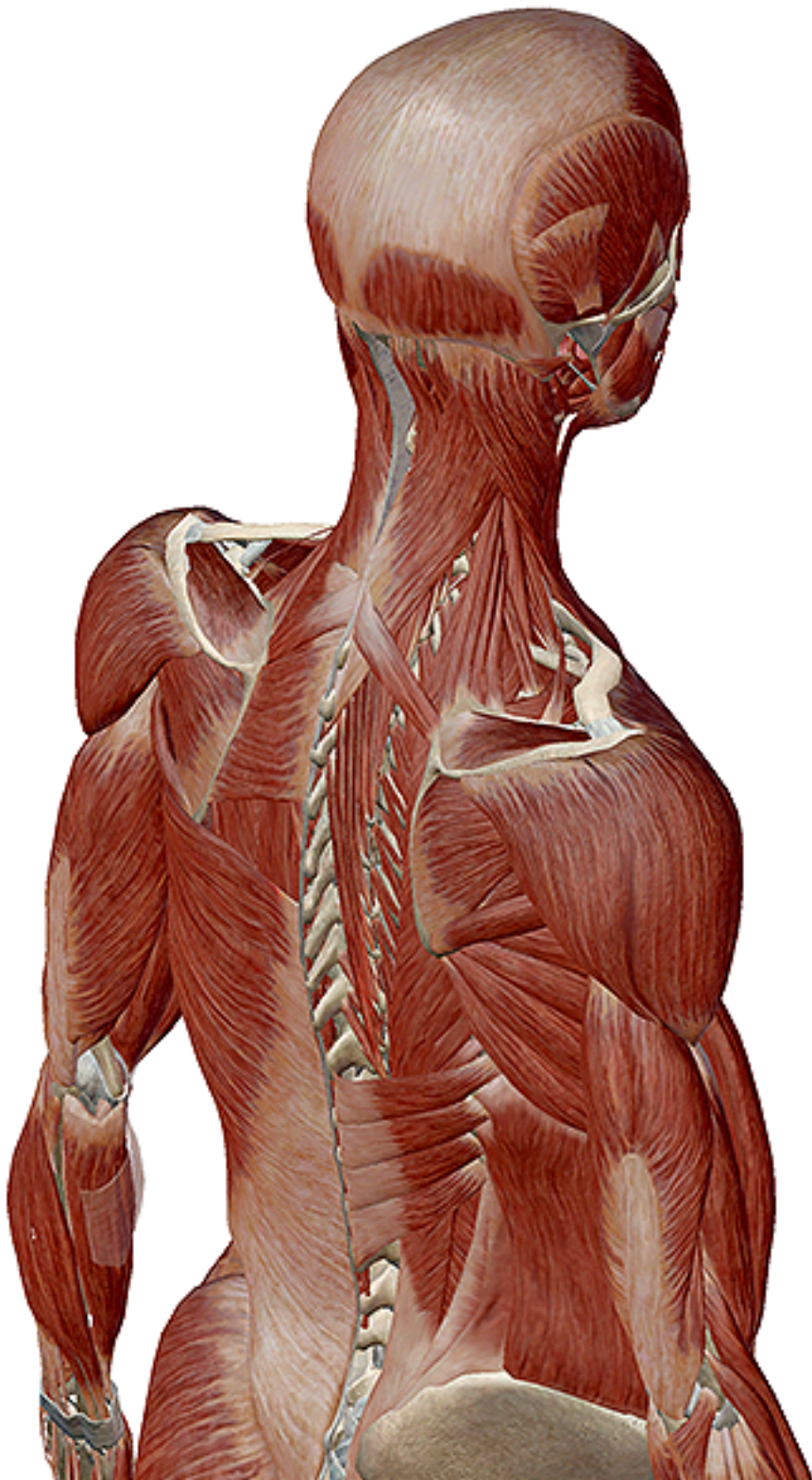
Share this slideshow!



www.visiblebody.com



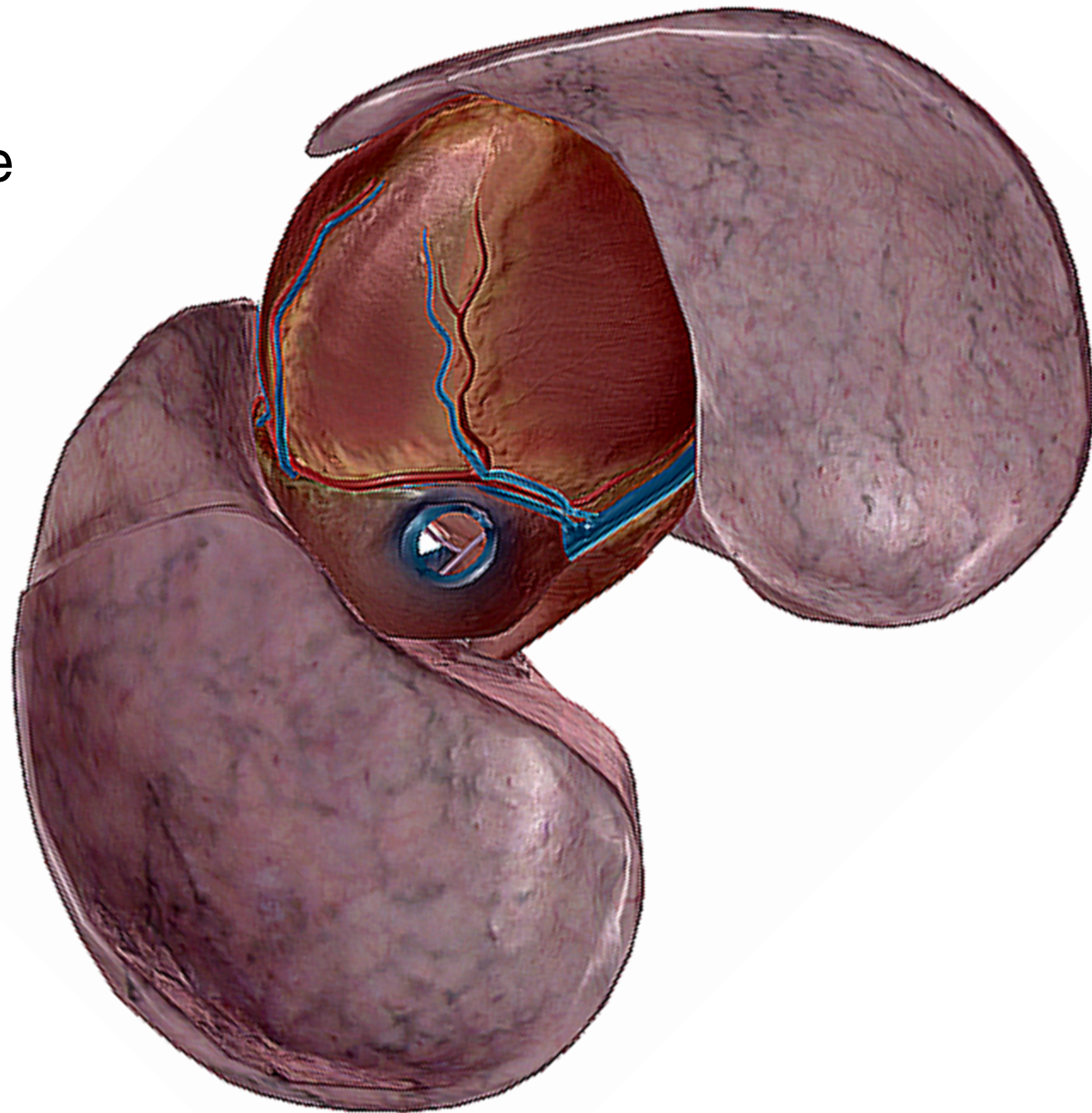
The **muscles of the spine** are an intricate network that stabilize the head, neck, spine, and thoracic cage.



The **lungs** of the body are asymmetrical.

The left lung is more concave than the right, as the heart fits right into it.

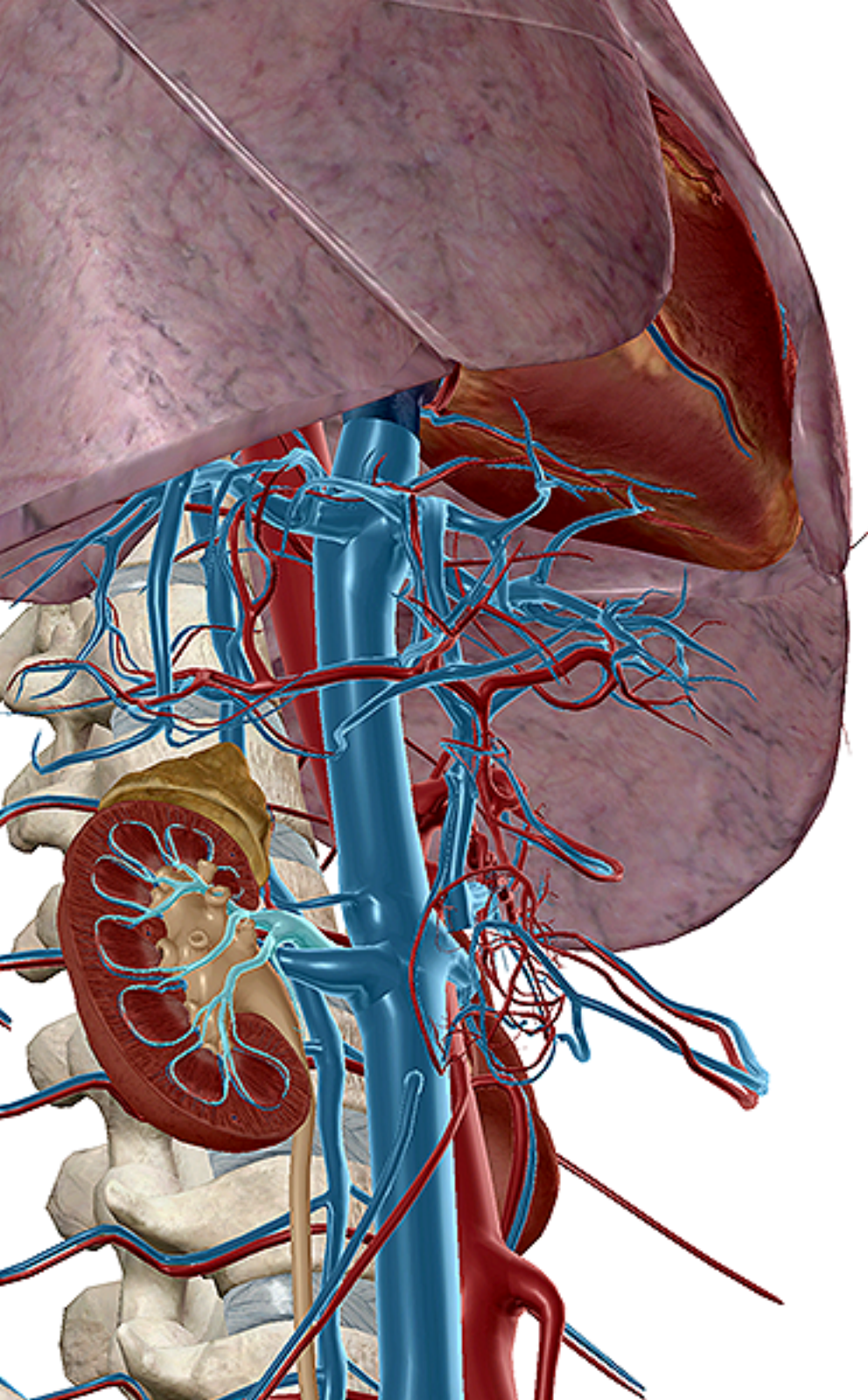
Factoid: The surface area of the lungs is 70 m². That's the size of a singles tennis court!



Share this slideshow!



www.visiblebody.com



The **renal arteries** of the circulatory system deliver blood to the kidneys. The kidneys remove waste from the blood; this waste then passes into the renal pelvis and to the ureters.

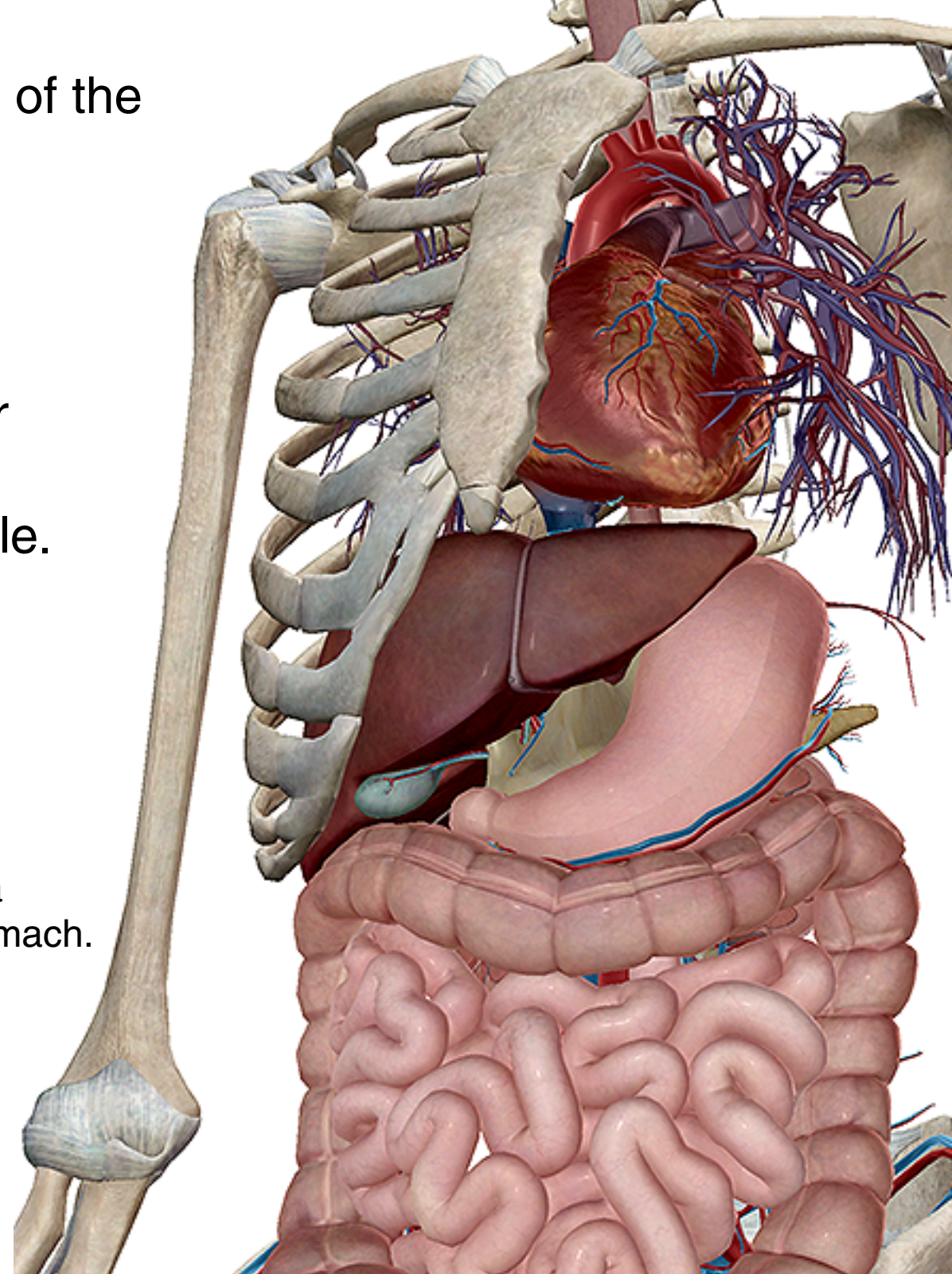
Factoid: Every day, **over 50 gallons (189 liters)** of blood are processed by the kidneys.

The stomach is a major organ of the **digestive system**.

The internal layer of the stomach is the **serosa**, followed by the **mucosa** (or external layer), as well as three layers of smooth muscle.

The stomach breaks down ingested food into **chyme**.

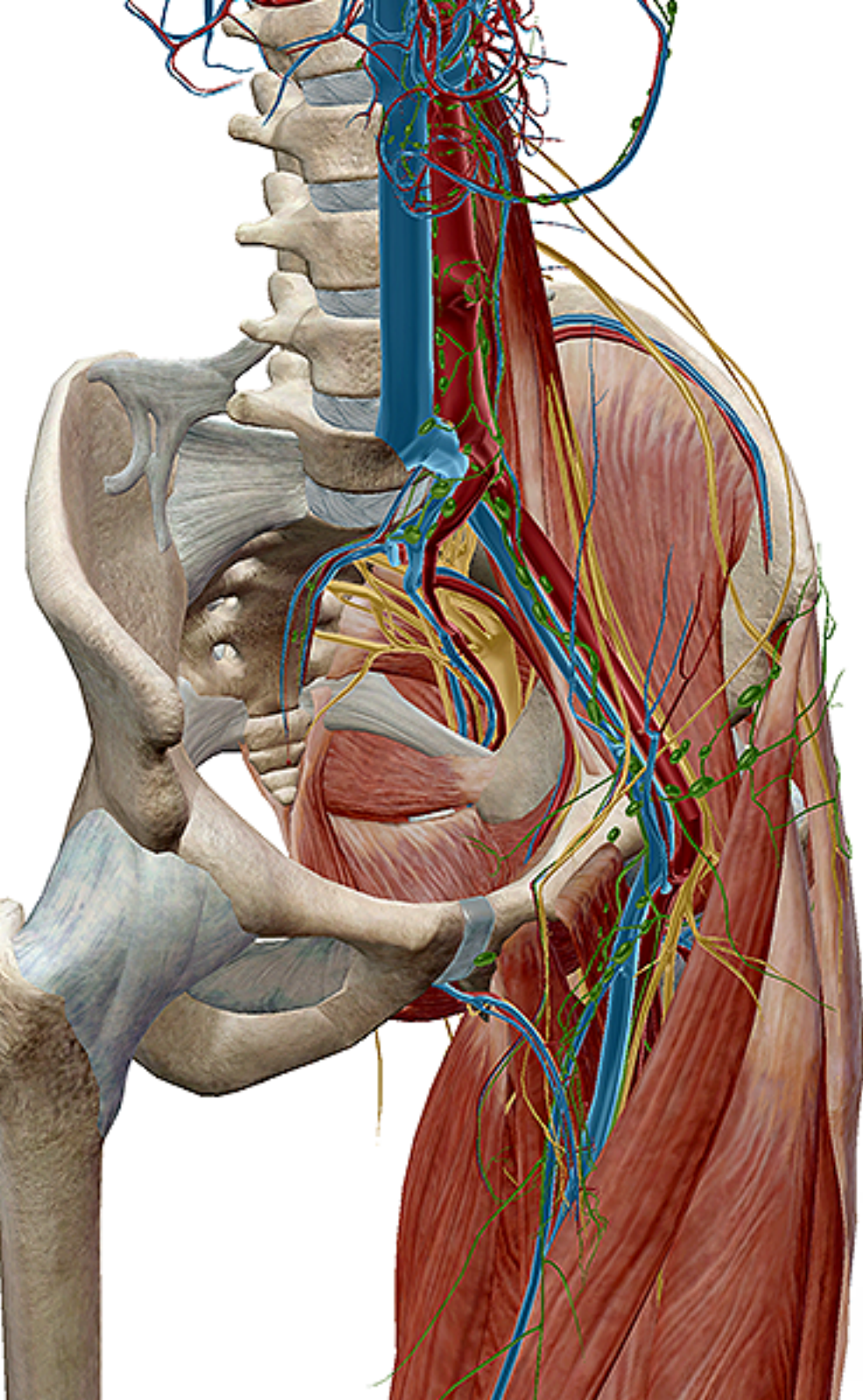
Factoid: It takes about eight seconds for a piece of swallowed food to reach your stomach.



Share this slideshow!

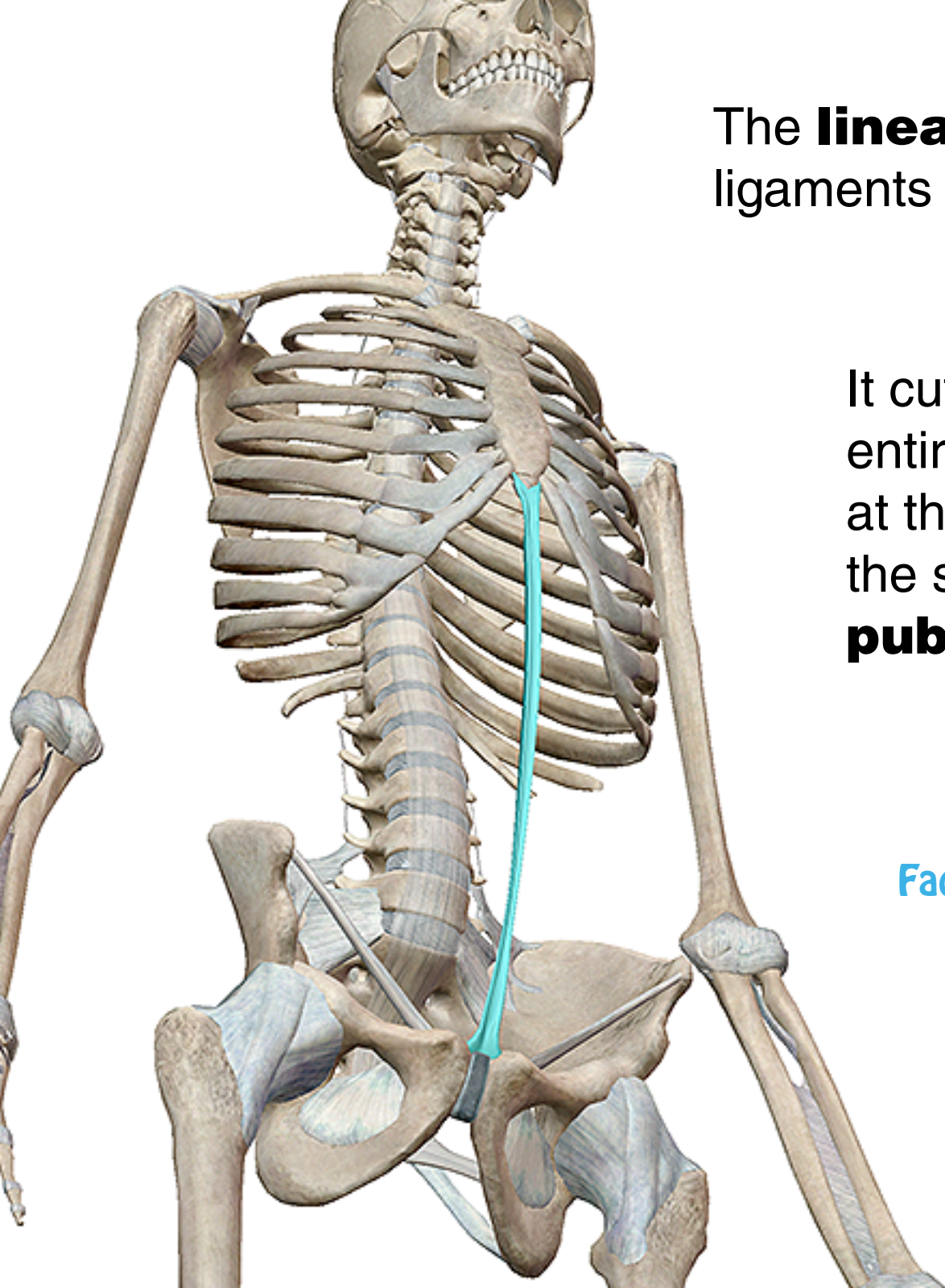


www.visiblebody.com



Numerous structures of the nervous, circulatory, and lymphatic systems pass through the **pelvic girdle**.

The **sciatic nerve** (yellow structure branching from the sacrum) and other nerves of the abdomen innervate the muscles of the lower limbs, the pelvis, and the abdomen.



The **linea alba** is one of the longest ligaments in the entire body.

It cuts a straight line down the entire abdomen, beginning at the **xiphoid process** of the sternum and ending at the **pubic symphysis**.

Factoid: Linea alba is Latin for “white line.”



HUMAN ANATOMY ATLAS

VISIBLE BODY®

See more with Human Anatomy Atlas.

[iOS](#) | [PC](#) | [Mac](#) | [Android](#) | [Facebook](#)

Human Anatomy Atlas is also available for [site license](#).

All the images and content are from Human Anatomy Atlas, the best-selling and most comprehensive 3D human anatomy general reference available.



VISIBLE BODY®