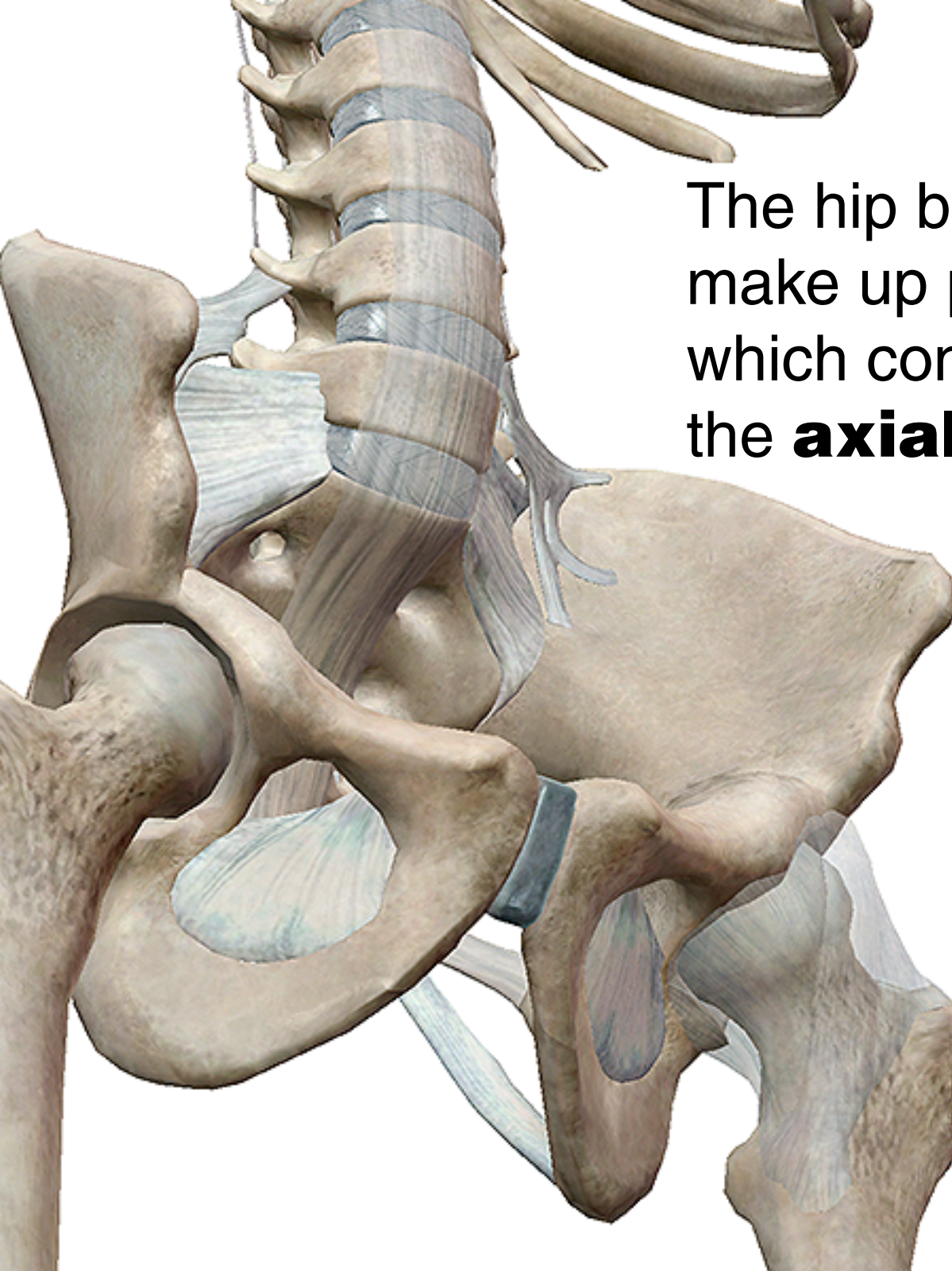
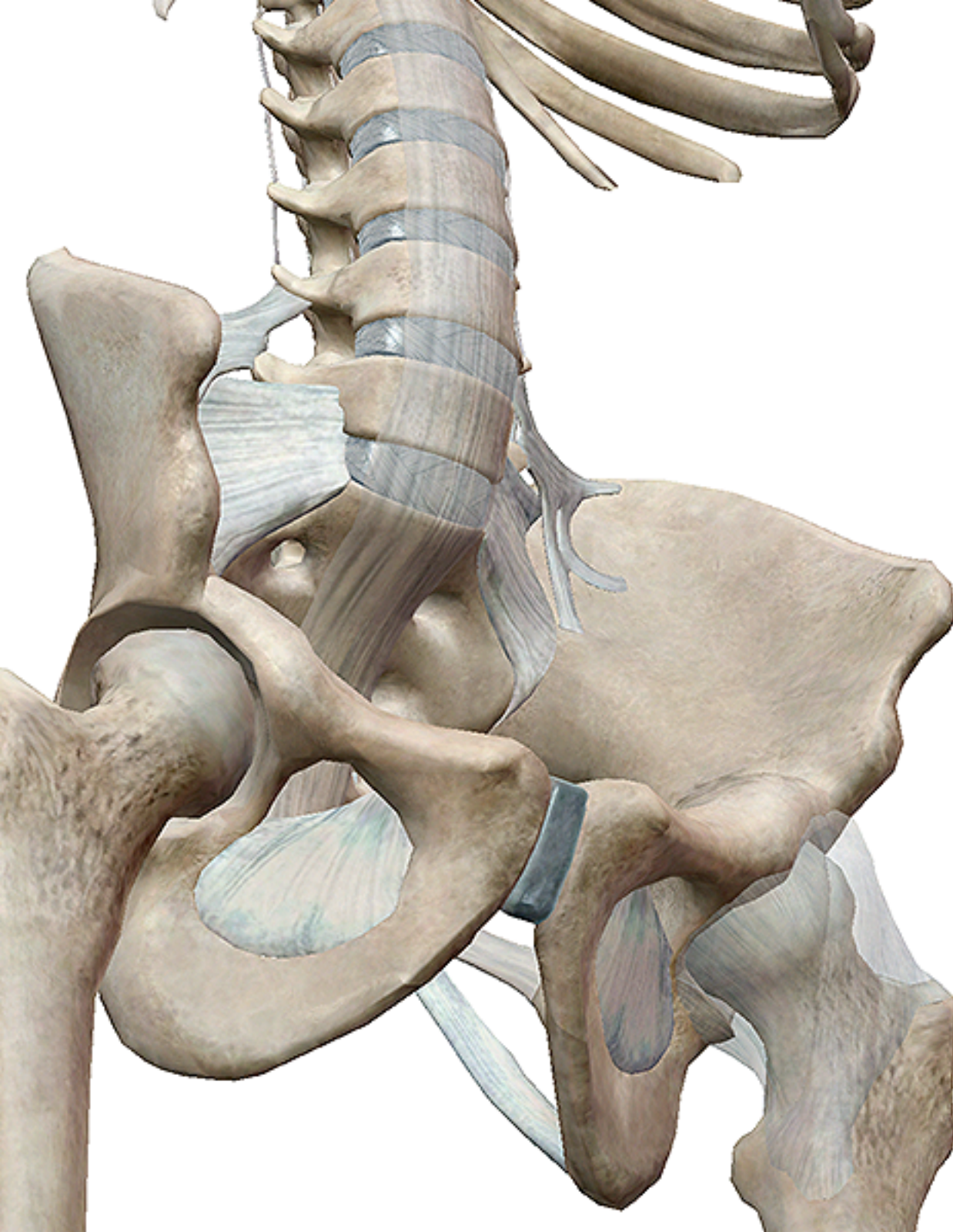


# Three cool facts about the hip bones



The hip bones, or **os coxae**, make up part of the pelvic girdle, which connects the lower limbs to the **axial skeleton**.

Each hip bone is a large, flattened, and irregularly shaped fusion of three bones: the ilium, ischium, and pubis.



**Hang on a sec!**  
Want to follow along?

If you have Human Anatomy Atlas, rotate, zoom, and dissect this same view by downloading it to your [iOS device](#) or [Android device](#)!

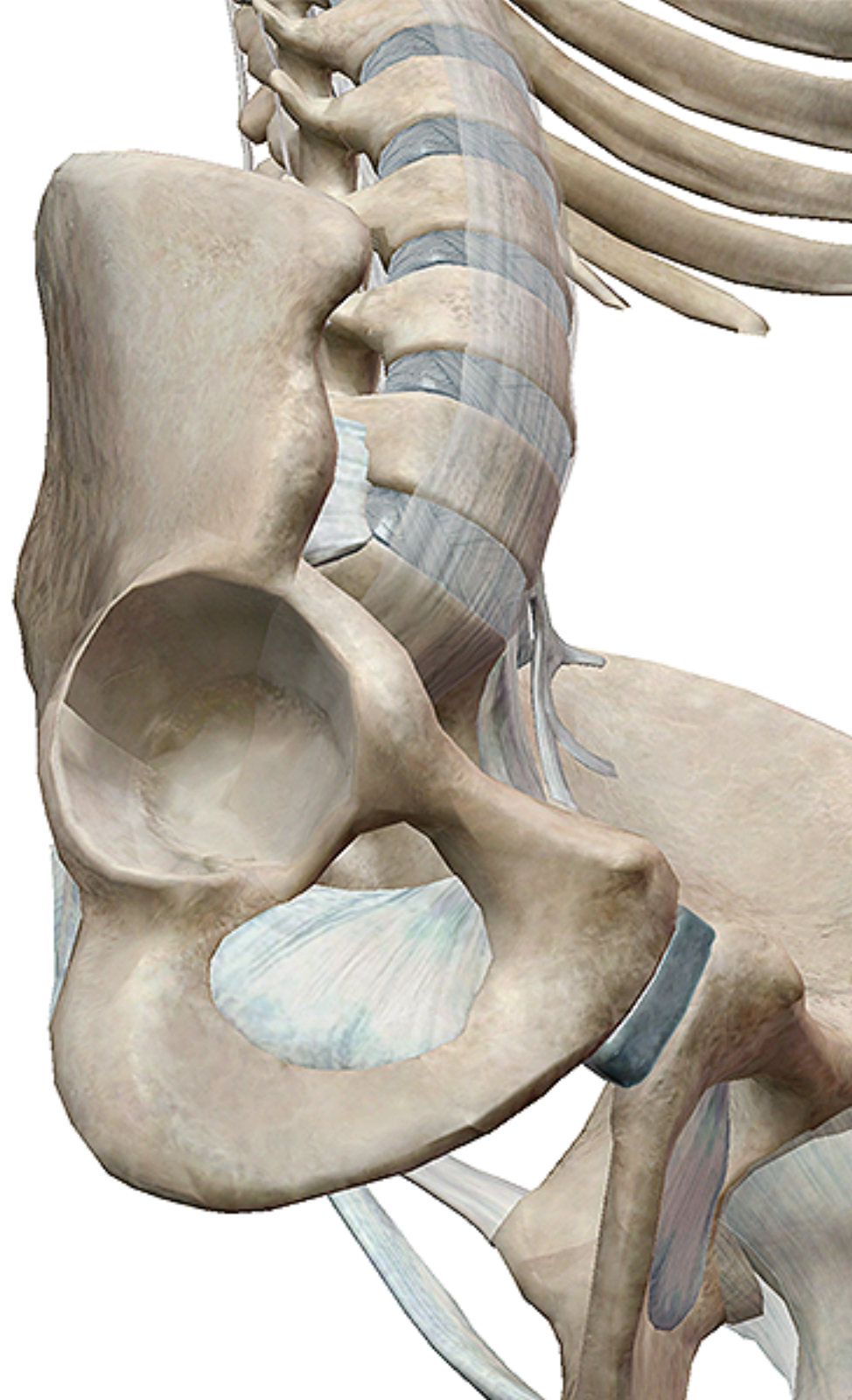
Don't have Atlas? Get it for free for your [iOS device](#) or [Android](#).



The **acetabulum** is the name of the concave cavity in the hip socket.

This cavity is formed by all three bones of the os coxae.

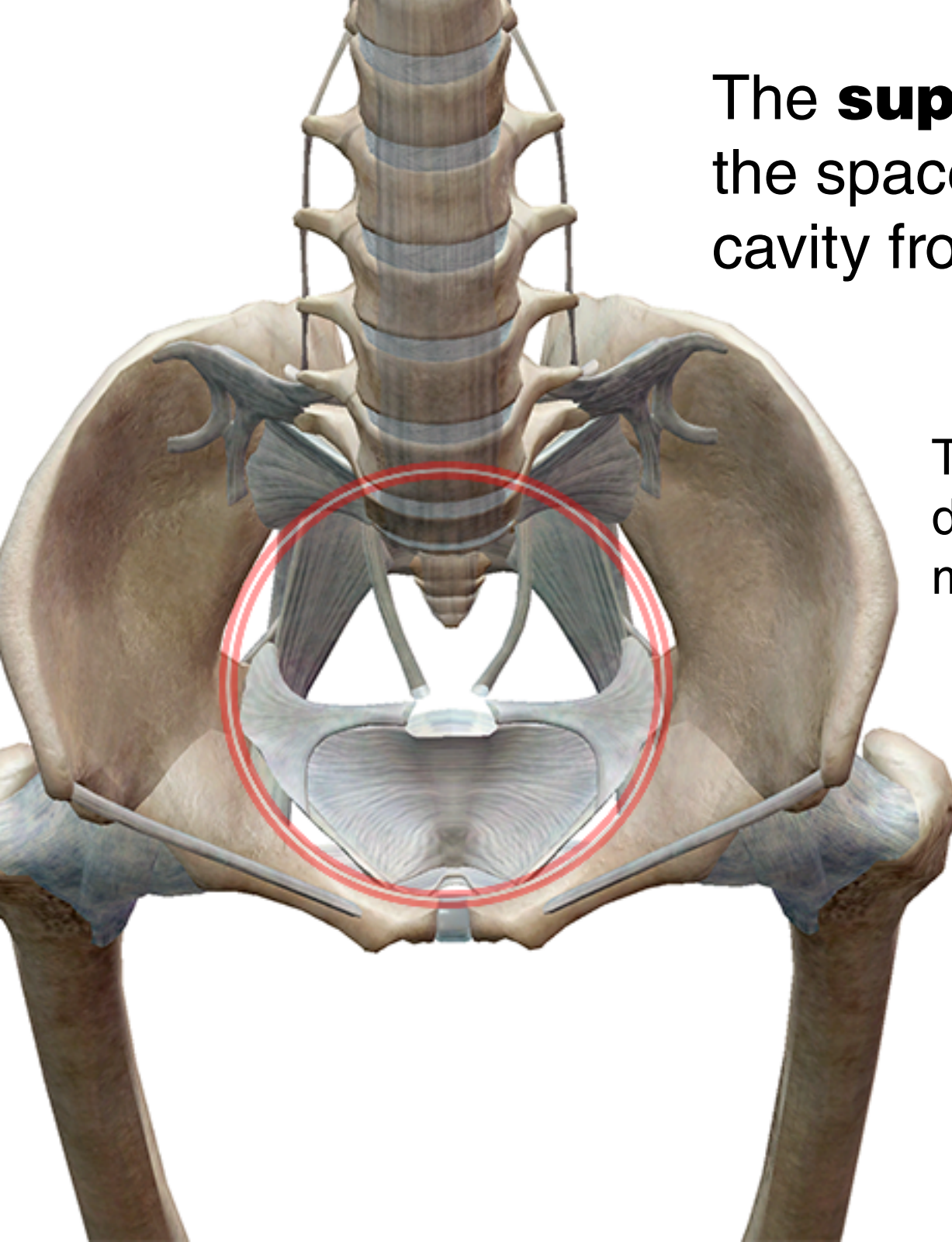
**Factoid:** The word “acetabulum” means “little vinegar cup” in Latin.

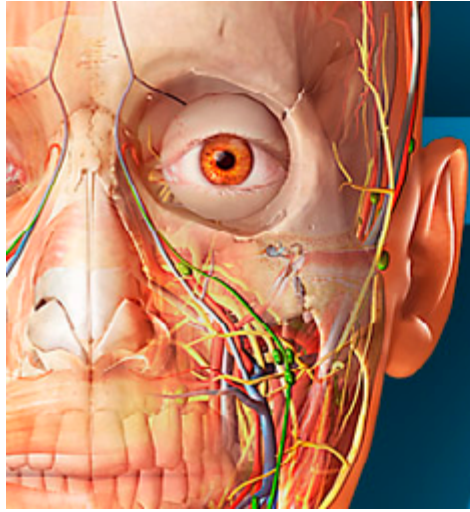


The **superior aperture** is the space that divides the pelvic cavity from the abdominal cavity.

The female pelvis is more delicate and shallower than the male's, with less sloped ilia.

**Factoid:** While the hip bones of the female skeleton are more delicate than the male's, the superior aperture of the female pelvis is larger and more circular.





# HUMAN ANATOMY ATLAS

VISIBLE  BODY<sup>®</sup>

## See more with Human Anatomy Atlas.

[iOS](#) | [PC](#) | [Mac](#) | [Android](#) | [Facebook](#)

Human Anatomy Atlas is also available for [site license](#).

All the images and content are from Human Anatomy Atlas, the best-selling and most comprehensive 3D human anatomy general reference available.



VISIBLE  BODY<sup>®</sup>